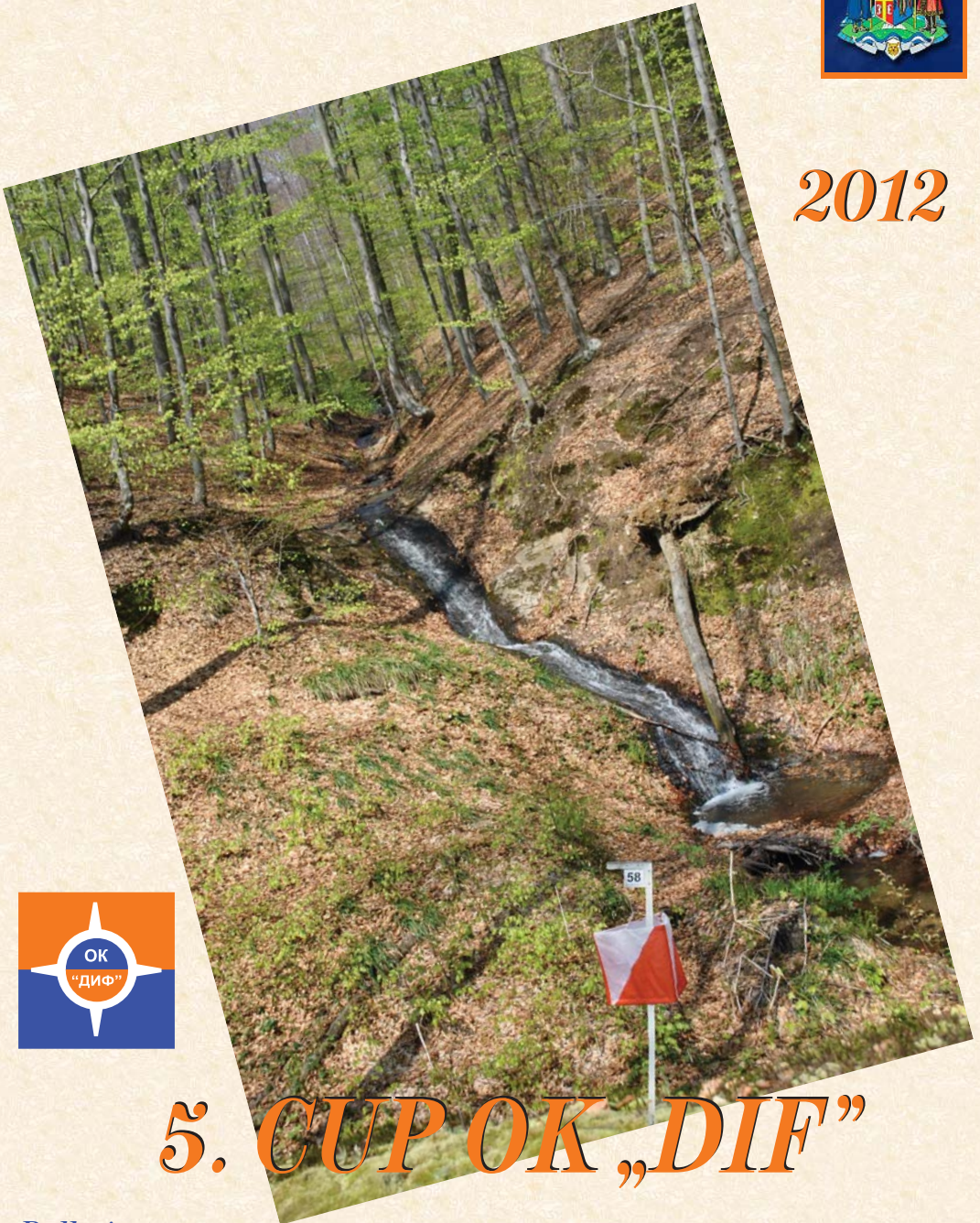


# ARANDJELOVAC OPEN



2012



## 5. CUP OK „DIF”

Bulletin 2

ARANDJELOVAC – BUKULJA – 05./06. 05. 2012.

▣ Date:

05. / 06. 05. 2012.

▣ Organizer:

**ORIENTEERING CLUB  
„DIF“**

▣ Patrons:

Ministry of Youth and Sport of the Republic of Serbia,  
Arandjelovac Municipal Assembly, Orienteering  
Association of Serbia, Faculty of Sport and Physical  
Education – University of Belgrade, Arandjelovac  
Sports Association, Tourist Organization of  
Arandjelovac, Mountaineering Club “Bukulja”



▣ Event director:

Irina Juhas

▣ National adviser:

Dragan Nikolić

▣ Club adviser:

Ilija Dimitrijević

▣ Place:

1. day - Arandjelovac  
park „Bukovička banja“

2. day - Mountain Bukulja

▣ Competition  
center:

1. day – Arandjelovac,  
hotel „Sumadija“ (access  
map attached)

2. day – On the southern  
slope mountain Bukulja,  
with access from road  
Arandjelovac - Rudnik  
(access map attached)

▣ Programme:

1. day  
09:00 Event centre  
opens  
11:00 Opening ceremony  
11:15 Meeting with team  
leaders  
11:30 Quarantine  
12:00 First start  
14:30 Victory ceremony  
16:00 Tourist  
programme

2. day  
08:30 Event centre opens  
10:00 First start  
14:00 Victory ceremony  
14:30 Closing ceremony

▣ Map:

„Bukovička banja“  
1/4000; 2m  
October 2011 / April 2012

„Bukulja - jug“  
1/10000; 5m  
October 2011 / April 2012

▣ Terrain  
description:

City park

Mostly beech forest -  
all levels of runnability.  
Mountain terrain with a lot  
of ditches and valleys.

▣ Prohibited area:

Park „Bukovička banja“  
Arandjelovac

South slope of Bukulja  
mountain

- Type of race:** Sprint Middle  
**Course setters:** Jelena Kozoderović Branislav Radosavljević  
**Scoring:** Both days will be scored for Arandjelovac OPEN & 5. CUP of OK "DIF"  
**Categories:** Women: 12, 14, 16, 18-20, 21E, 21A, 21B, 35, 45, 55  
Men: 12, 14, 16, 18-20, 21E, 21A, 21B, 35, 40, 50, 60  
OPEN: OPEN B (advanced) OPEN C (beginners)  
Children: D7 & D10 – marked

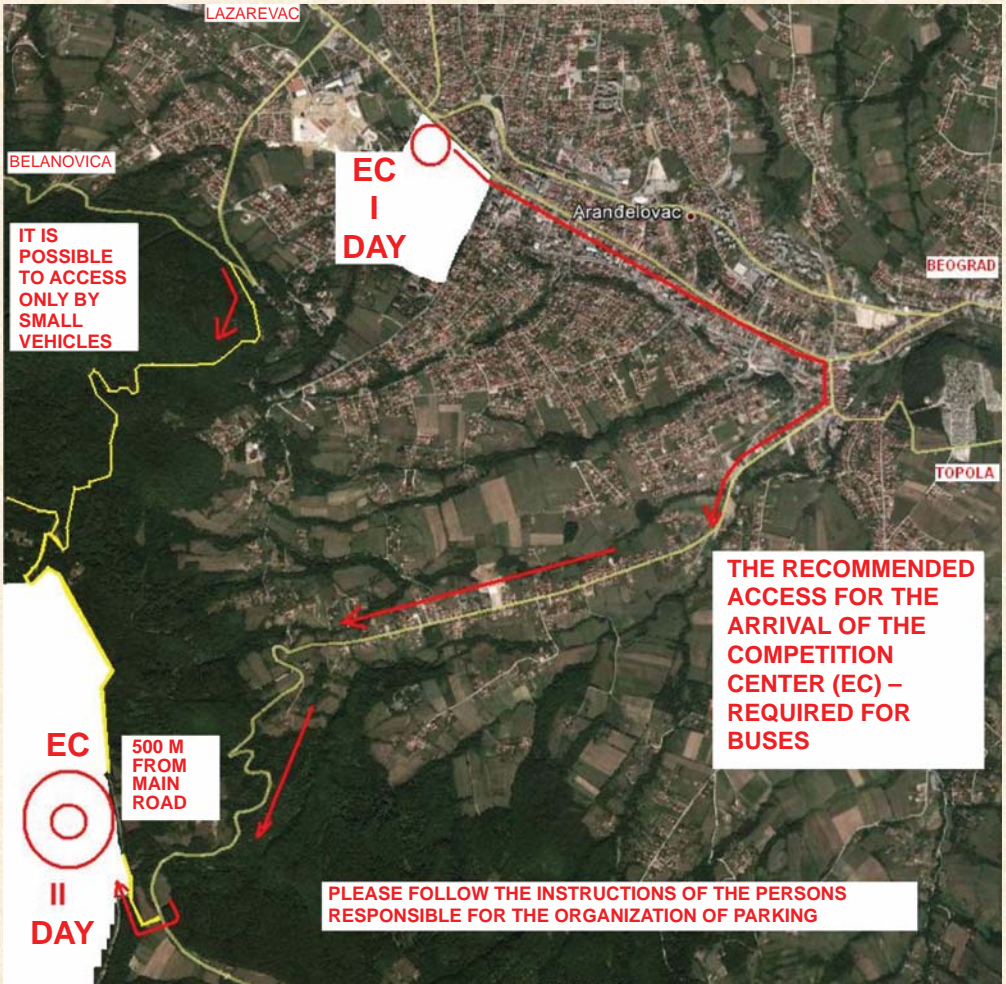
<b>Approximate lengths:</b>	<b>1. day</b>	<b>2. day</b>
OPEN C – beginners	1,3	1,5
OPEN B – advanced	1,6	2,5
<b>Ж/W 12</b>	1,3	1,5
<b>Ж/W 14</b>	1,4	1,7
<b>Ж/W 16</b>	1,6	2,6
<b>Ж/W 18/20</b>	1,9	3,4
<b>Ж/W 21B</b>	1,8	2,9
<b>Ж/W 21A</b>	2,0	3,7
<b>Ж/W 21E</b>	2,4	4,3
<b>Ж/W 35</b>	1,8	2,9
<b>Ж/W 45</b>	1,6	2,3
<b>Ж/W 55</b>	1,4	1,8
<b>M 12</b>	1,3	1,5
<b>M 14</b>	1,4	1,7
<b>M 16</b>	1,8	2,9
<b>M 18/20</b>	2,2	4,2
<b>M 21B</b>	2,0	3,4
<b>M 21A</b>	2,5	4,3
<b>M 21E</b>	3,0	5,6
<b>M 35</b>	1,9	3,8
<b>M 40</b>	1,8	2,9
<b>M 50</b>	1,6	2,9
<b>M 60</b>	1,4	1,8

- ☑ **Information:** <http://www.okdif.org.rs/> - [okdif.bg@gmail.com](mailto:okdif.bg@gmail.com)  
Phone +381637766046
- ☑ **Entries:** On line: <http://www.orienteingonline.net>  
Via e-mail: [okdif.bg@gmail.com](mailto:okdif.bg@gmail.com)
- ☑ **Deadline:** 25.04.2012. Contact person: Irina Juhas,  
+381637766 046
- ☑ **Fee** 4 eur / day M/W 12/14 – 2 eur / day  
7 eur / 2 days 4 eur / 2 days  
Children race – D7 & D10 – free
- ☑ **Time keeping:** SPORTIdent system – SI card rent fee 2 eur
- ☑ **Transport:** Transportation will not be organized. Arandjelovac is located about 80 km south of Belgrade, access is possible from several directions. Map is enclosed.
- ☑ **Accommodation:** A variety of accommodation in and around the city:  
1. <http://www.bukovickabanja.rs/smestaj.html>  
2. <http://www.arandjelovaonline.com/smestaj/smestaj-u-arandelovcu> Booking accommodation over INFO Center Tourism Organization Arandjelovac, tel.+38134715335 or e-mail to [info@bukovickabanja.rs](mailto:info@bukovickabanja.rs) or [ar.infocentar@gmail.com](mailto:ar.infocentar@gmail.com)
- ☑ **Turist programme:** On Saturday 5th May, after 16:00 scheduled guided tour of the cave Risovača and Orasac. Applications till April 4th on [okdif.bg@gmail.rs](mailto:okdif.bg@gmail.rs)

**EACH COMPETITOR PARTICIPATES IN THE EVENT  
AT HIS/HER OWN RISK.**

# HOW TO COME





WELCOME !!!

## SPONSORS

